

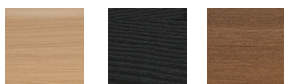


# SHANGHAI DINING

by Rune Krøjgaard & Knut Bendik Humlevik

The Shanghai Chair features a solid ash wooden frame and a seat of paper cord or leather. The look of the Shanghai Chair is pure, with details that highlight the quality of construction and craftsmanship. The back and armrest of this chair is made from one piece, it surrounds the body naturally and creates a comfortable space. The structure of this chair is inspired by the classic Chinese chair of the Ming Dynasty. The beauty of the ash wood is an integral part of this chair's expression, which was intended in order to create a piece of furniture from a simple structure and minimal detailing, uniting Asian and Scandinavian furniture design.

## SHANGHAI FRAME VARIATIONS

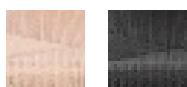


Natural  
Oak

Black  
Oak

Smoked  
Oak

## PAPER CORD VARIATIONS



Natural

Black

## UPHOLSTERY VARIATIONS

### SØRENSEN VINTAGE LEATHER



Camel

Cognac

Dark  
Brown

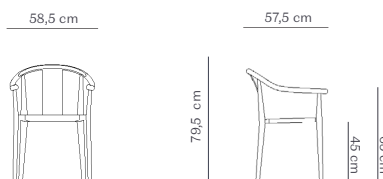
Anthrazite

Rust

CUSTOMER OWN LEATHERS AND FABRICS AVAILABLE ON REQUEST

## DIMENSIONS

Width: 58,5 cm  
Depth: 57,5 cm  
Height: 79,5 cm  
Seat height: 45 cm  
Armrest Height: 65 cm



## MATERIALS

The frame is 100% Ash. The seat is handwoven of papercord or upholstered with leather.

## CARE INSTRUCTIONS

Follow instructions on partner.norr11.com

## CERTIFICATION

Shanghai Dining Chair fulfills the requirements in EN 1022:2005 and EN 16139:2013. Loading according to Test severity L1. Danish Technological Institution.

## COUNTRY OF ORIGIN

EU