

De Projectinrichter 

[www.deprojectinrichter.com](http://www.deprojectinrichter.com)

088 - 650 12 34

**showtime<sup>®</sup>**

Hospitality and Leisure Needlefelt

**showtime<sup>®</sup>** nuance **showtime<sup>®</sup>** experience

 40m x 2m

# [showtime

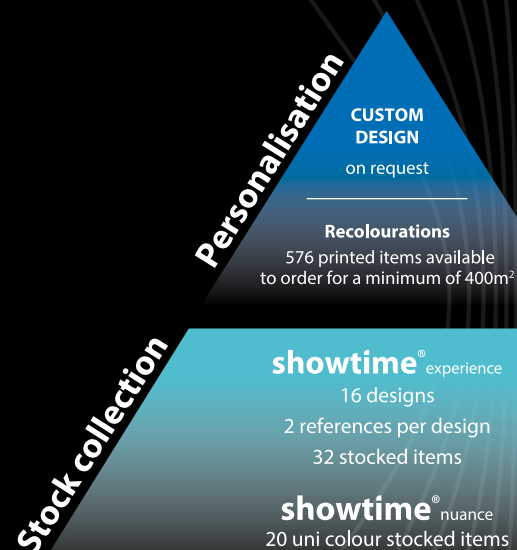
The Hospitality and Leisure sector is an exciting and complex world where all the elements of an interior scheme combine to deliver an experience for the occupants or users of each facility.

Spanning traditional, boutique and apartment hotels, to tourist accommodation, student halls of residence, cinemas, theatres and nightclubs, these richly diverse spaces demand a truly flexible approach to materials in order to convey the desired ambiance and support brand identity.

Working closely with Hospitality and Leisure Architects, Designers and End Users, the Forbo design team have created a new and flexible needlefelt flooring concept, which offers an exciting cost-effective alternative to conventional broadloom carpet.

**showtime**<sup>®</sup><sub>nuance</sub> is a range of uni colours which coordinate perfectly with **showtime**<sup>®</sup><sub>experience</sub>, a range of printed items composed of four key trends: Wonderlab, Metropolis, Ecosystems and Heritage.

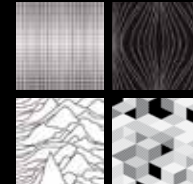
In addition to the stocked collection of 20 uni colours and 32 printed designs, the concept is extended by the ability to easily recolour your chosen design. Finally, because your projects are unique, our design team can assist in the realisation of Custom designs according to your requirements.



# [showtime<sup>®</sup> experience

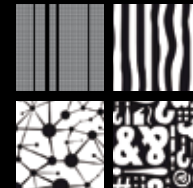
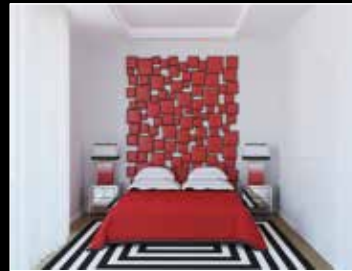
## WONDERLAB

An ode to high-tech and the digital world



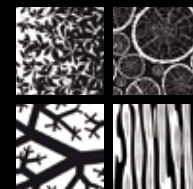
## METROPOLIS

Urban inspired networks and geometric designs



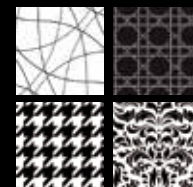
## ecosystems

Natural theme inspired by plants and aquatic forms



## HÉRITAGE

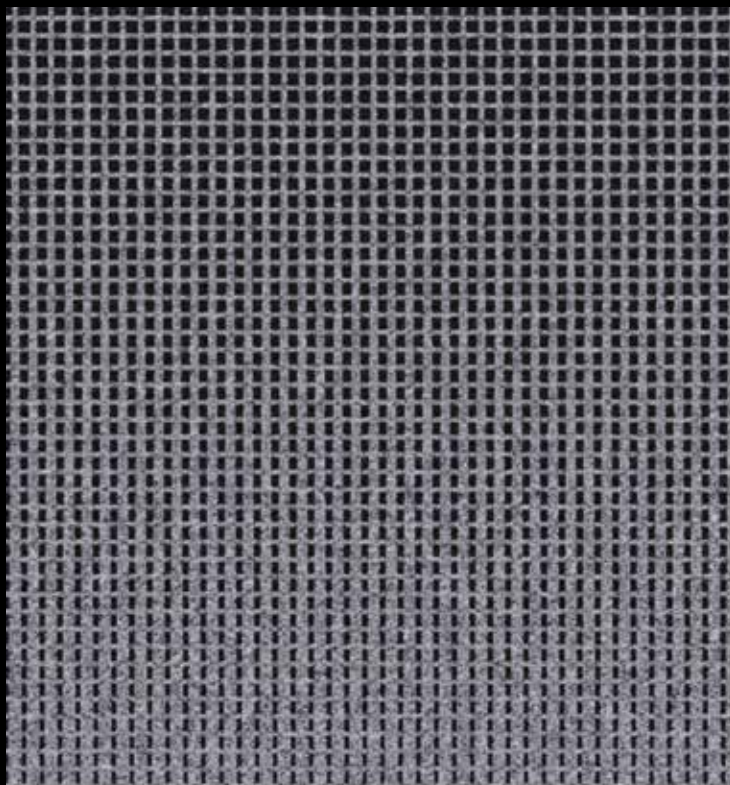
A tribute to timeless classic designs spanning tradition and modernity



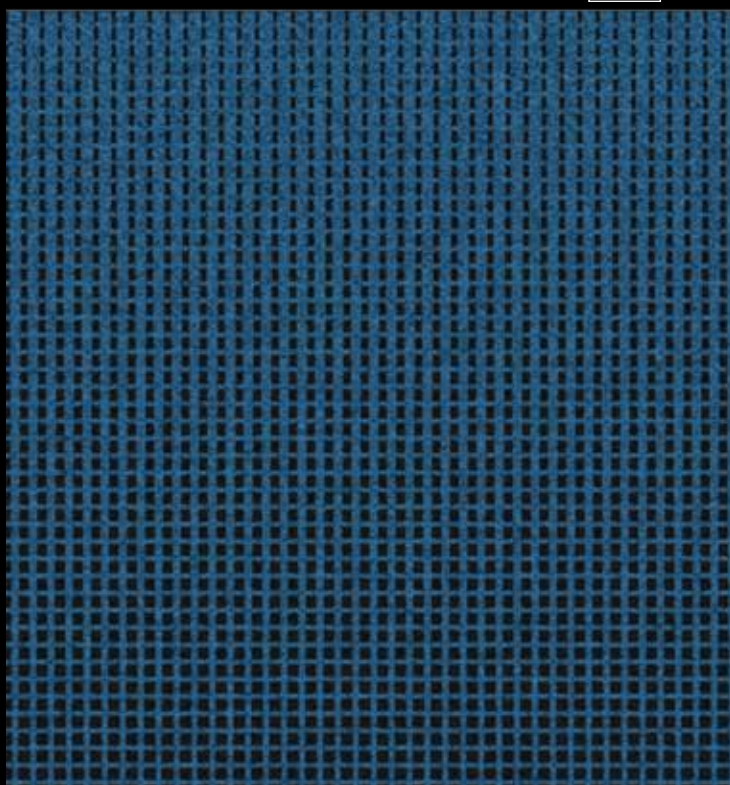
# WONDERLAB 01



PATTERN REPEAT 64 CM  
ROLLS LAID IN SAME  
DIRECTION



IN STOCK 922200

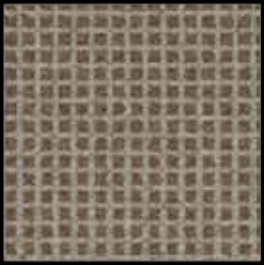


IN STOCK 922207

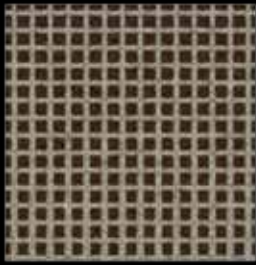


922207

Items below are special colour combinations available to order for a minimum of 400m<sup>2</sup>.



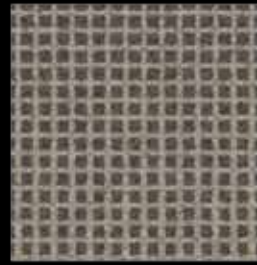
WON 01-1



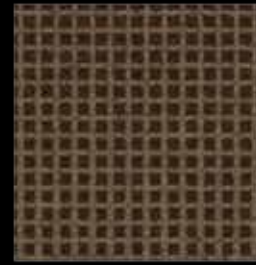
WON 01-2



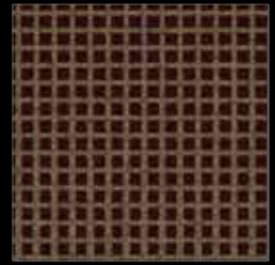
WON 01-3



WON 01-4



WON 01-5



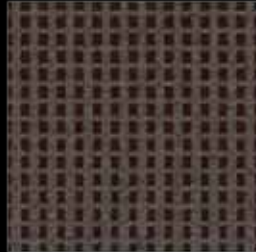
WON 01-6



WON 01-12



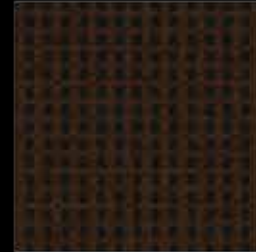
WON 01-11



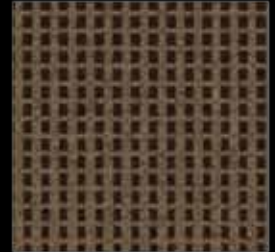
WON 01-10



WON 01-9



WON 01-8



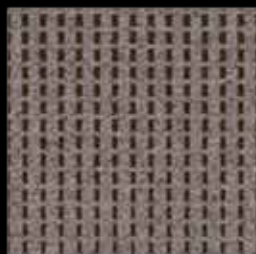
WON 01-7



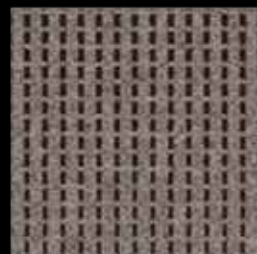
WON 01-13



WON 01-14



WON 01-15



WON 01-16



WON 01-17



WON 01-18



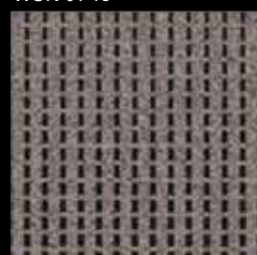
WON 01-24



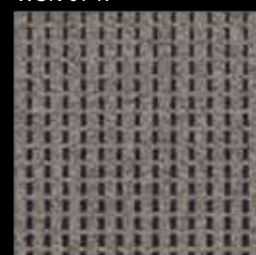
WON 01-23



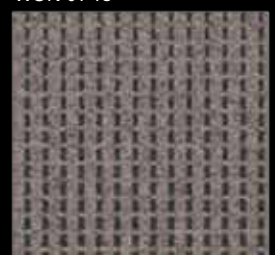
WON 01-22



WON 01-21



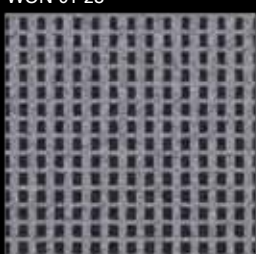
WON 01-20



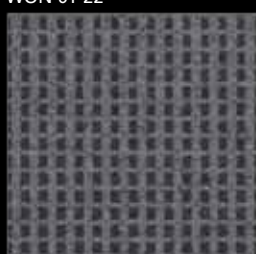
WON 01-19



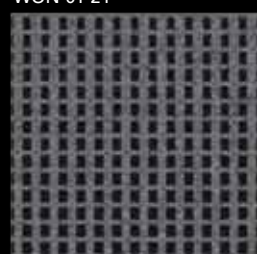
WON 01-25



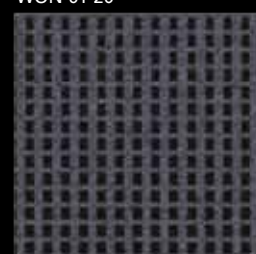
WON 01-26



WON 01-28



WON 01-29



WON 01-30



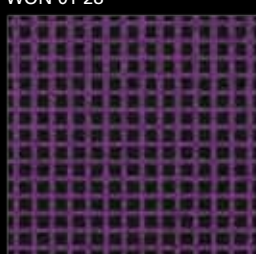
WON 01-31



WON 01-38



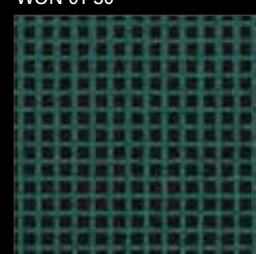
WON 01-37



WON 01-36



WON 01-35



WON 01-33



WON 01-32

# WONDERLAB 02



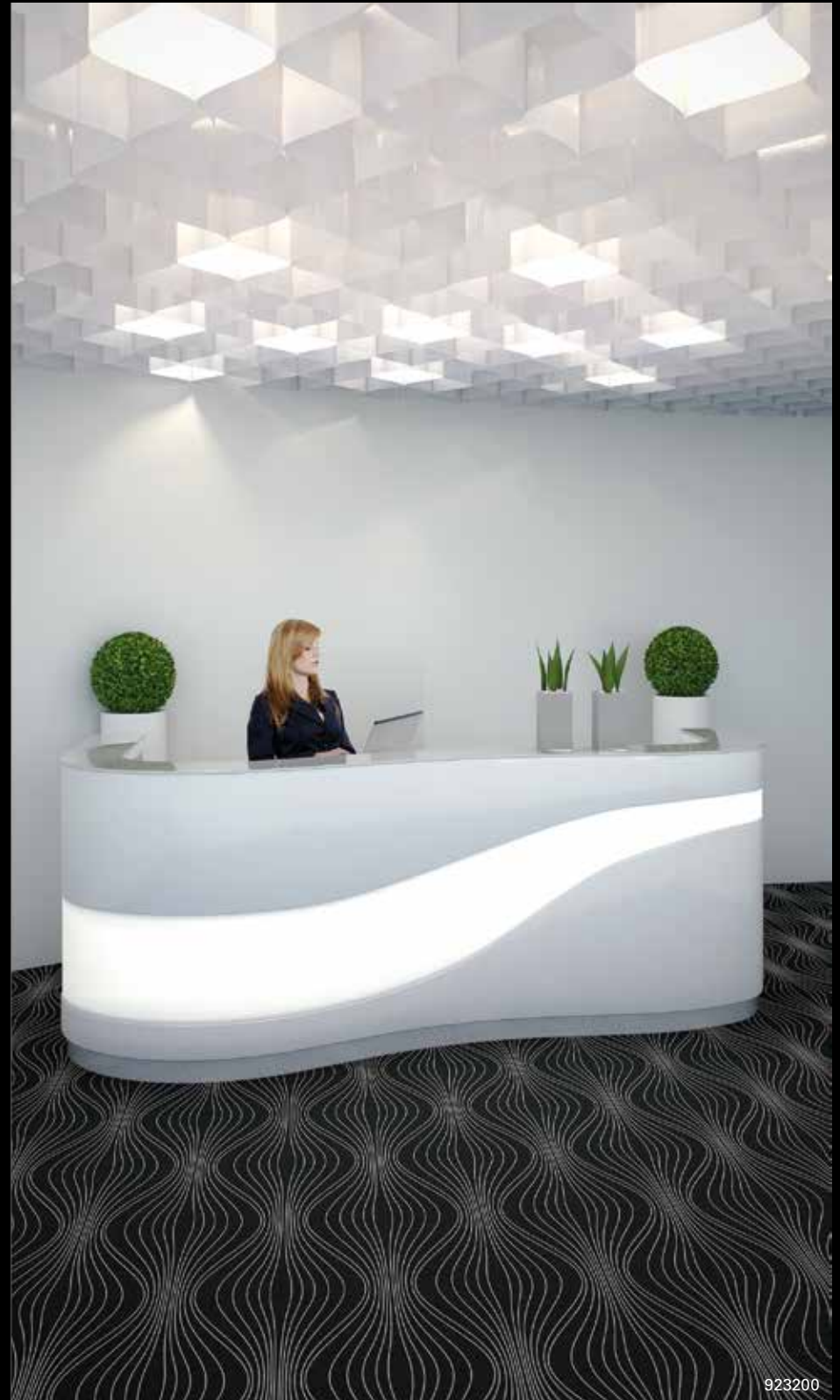
PATTERN REPEAT 64 CM  
ROLLS LAID IN SAME  
DIRECTION



IN STOCK 923200



IN STOCK 923228



923200

Items below are special colour combinations available to order for a minimum of 400m<sup>2</sup>.



WON 02-1



WON 02-2



WON 02-3



WON 02-4



WON 02-5



WON 02-6



WON 02-12



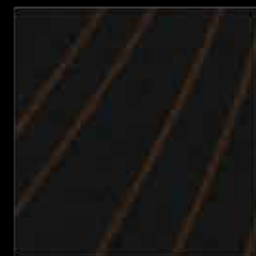
WON 02-11



WON 02-10



WON 02-9



WON 02-8



WON 02-7



WON 02-13



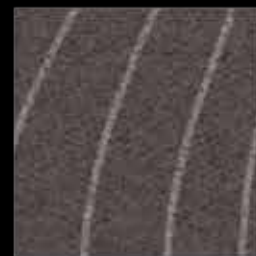
WON 02-14



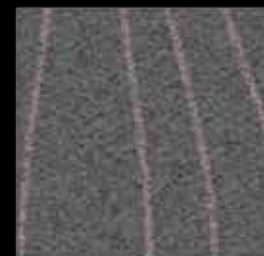
WON 02-15



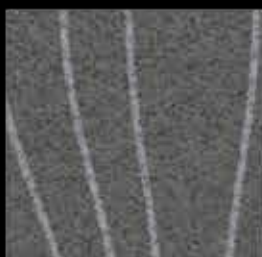
WON 02-16



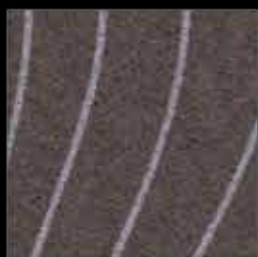
WON 02-17



WON 02-18



WON 02-24



WON 02-23



WON 02-22



WON 02-21



WON 02-20



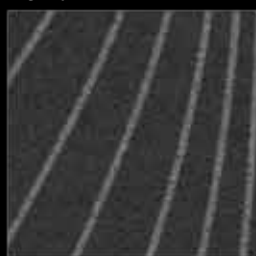
WON 02-19



WON 02-25



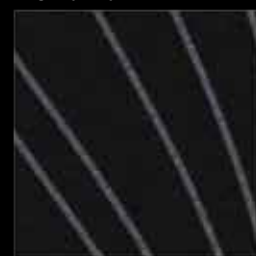
WON 02-26



WON 02-28



WON 02-29



WON 02-30



WON 02-31



WON 02-38



WON 02-37



WON 02-36



WON 02-35



WON 02-34



WON 02-32

# WONDERLAB 03



PATTERN REPEAT 64 CM  
ROLLS LAID IN SAME  
DIRECTION OR RANDOMLY



IN STOCK 924202



IN STOCK 924206



924206



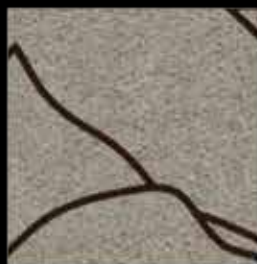
Items below are special colour combinations available to order for a minimum of 400m<sup>2</sup>.



WON 03-1



WON 03-2



WON 03-3



WON 03-4



WON 03-5



WON 03-6



WON 03-12



WON 03-11



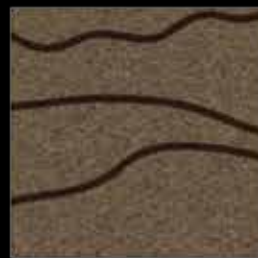
WON 03-10



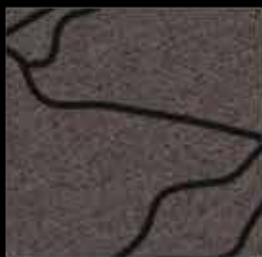
WON 03-9



WON 03-8



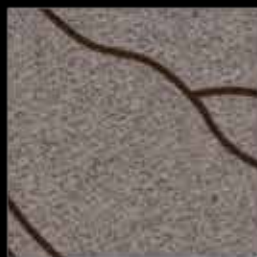
WON 03-7



WON 03-13



WON 03-14



WON 03-15



WON 03-16



WON 03-17



WON 03-18



WON 03-24



WON 03-23



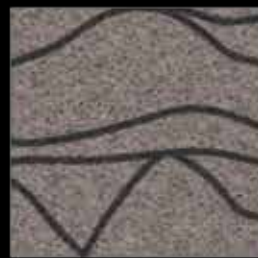
WON 03-22



WON 03-21



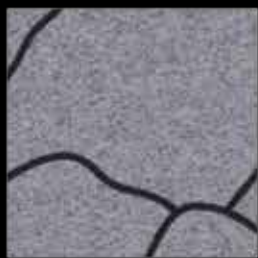
WON 03-20



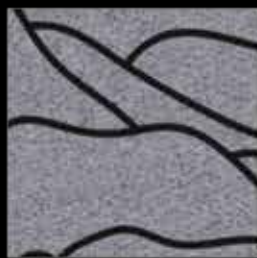
WON 03-19



WON 03-25



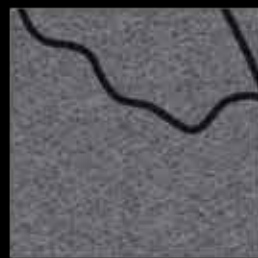
WON 03-26



WON 03-27



WON 03-28



WON 03-29



WON 03-31



WON 01-38



WON 01-36



WON 03-35



WON 03-34



WON 03-33

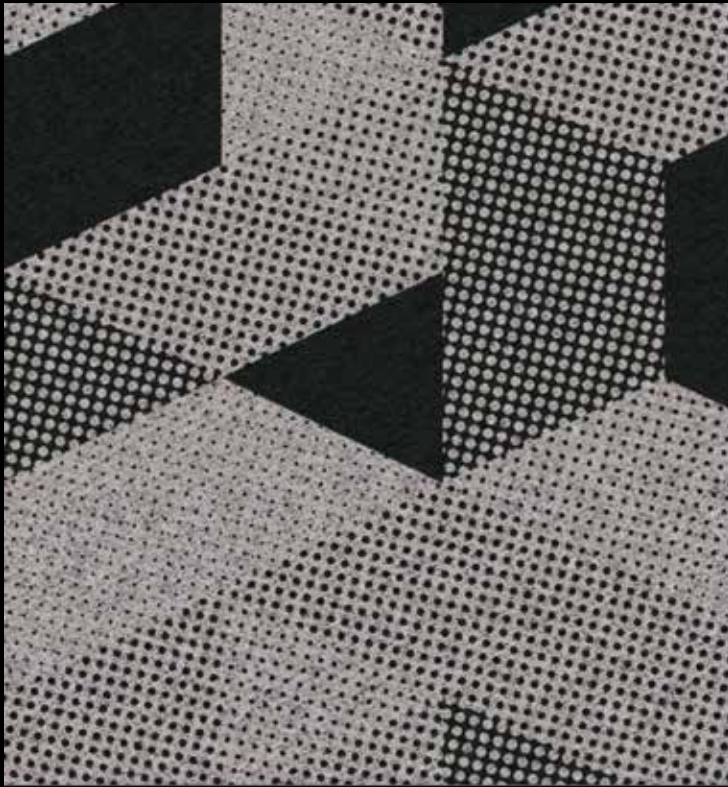


WON 03-32

# WONDERLAB 04



PATTERN REPEAT 8 CM  
ROLLS LAID IN SAME  
DIRECTION



IN STOCK 925200



IN STOCK 925216



925200

Pattern must be aligned both diagonally and horizontally

Items below are special colour combinations available to order for a minimum of 400m<sup>2</sup>.



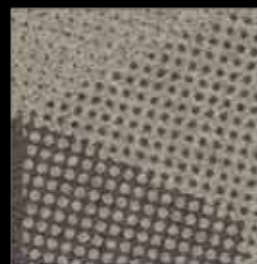
WON 04-1



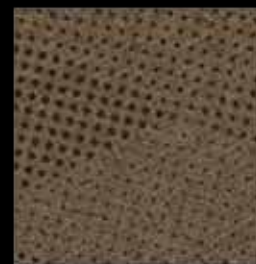
WON 04-2



WON 04-3



WON 04-4



WON 04-5



WON 04-6



WON 04-12



WON 04-11



WON 04-10



WON 04-9



WON 04-8



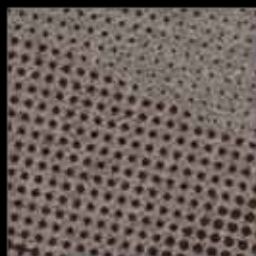
WON 04-7



WON 04-13



WON 04-14



WON 04-15



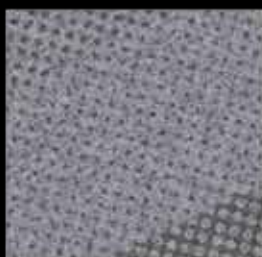
WON 04-16



WON 04-17



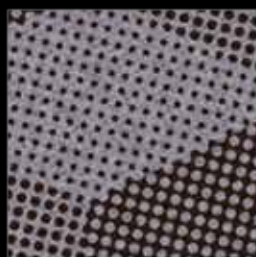
WON 04-18



WON 04-24



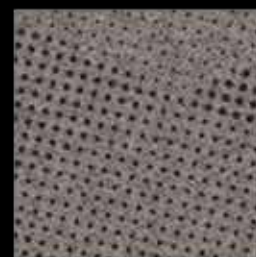
WON 04-23



WON 04-22



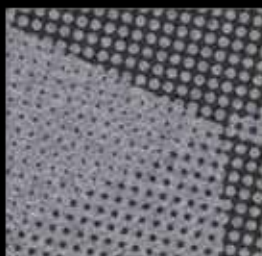
WON 04-21



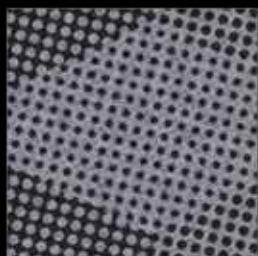
WON 04-20



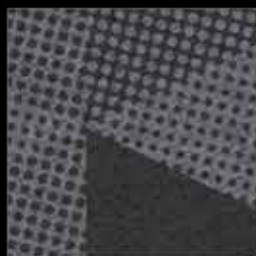
WON 04-19



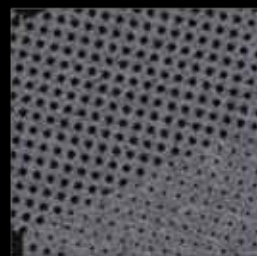
WON 04-25



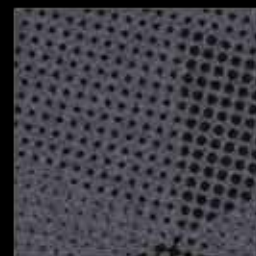
WON 04-26



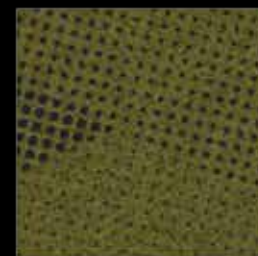
WON 04-28



WON 04-29



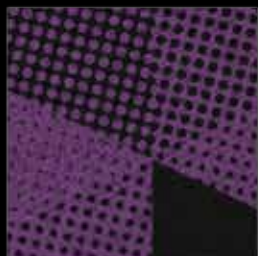
WON 04-30



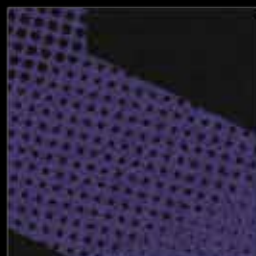
WON 04-31



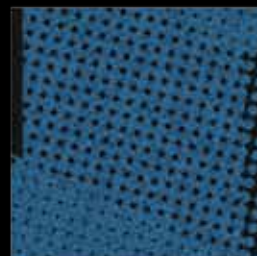
WON 04-37



WON 04-36



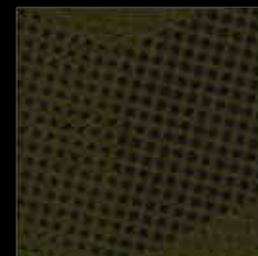
WON 04-35



WON 04-34



WON 04-33



WON 04-32

# METROPOLIS 01



PATTERN REPEAT 0.67 CM  
ROLLS LAID IN REVERSE  
DIRECTION OR RANDOMLY



IN STOCK 918200

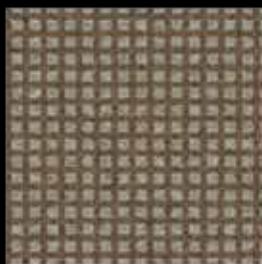


IN STOCK 918216

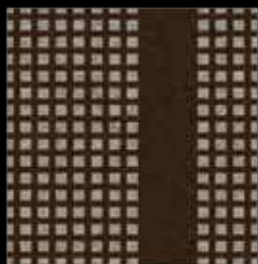


918216

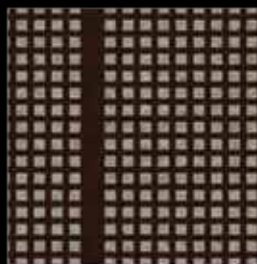
Items below are special colour combinations available to order for a minimum of 400m<sup>2</sup>.



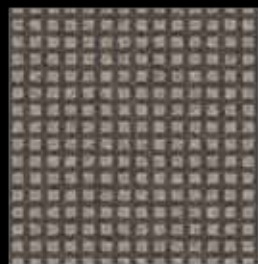
MET 01-1



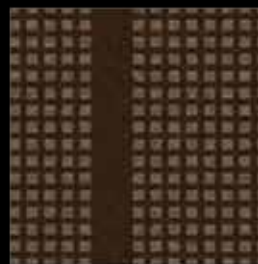
MET 04-2



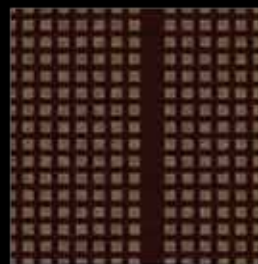
MET 04-3



MET 01-4



MET 01-5



MET 01-6



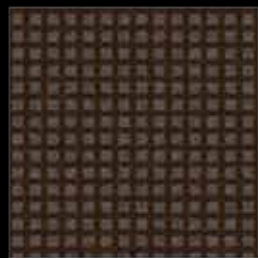
MET 01-12



MET 01-11



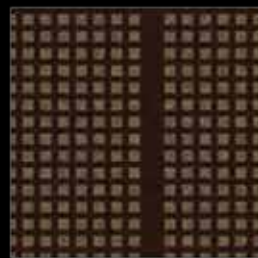
MET 01-10



MET 01-9



MET 01-8



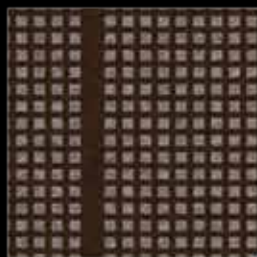
MET 01-7



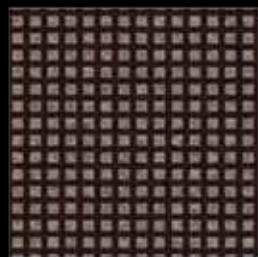
MET 01-13



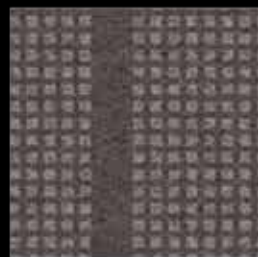
MET 01-14



MET 01-15



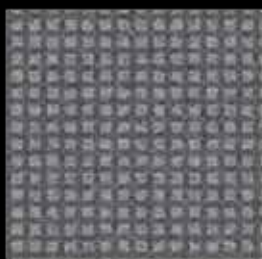
MET 01-16



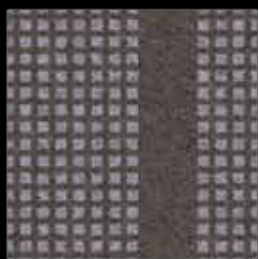
MET 01-17



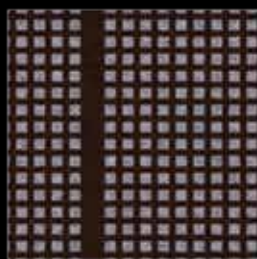
MET 01-18



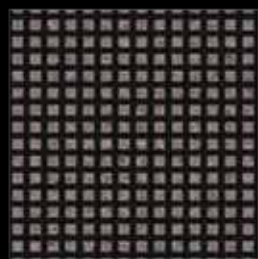
MET 01-24



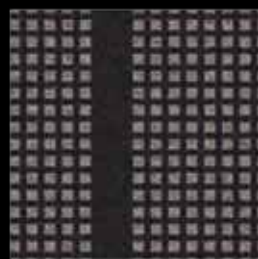
MET 01-23



MET 01-22



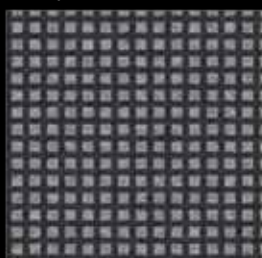
MET 01-21



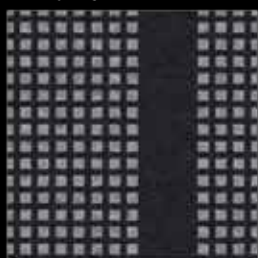
MET 01-20



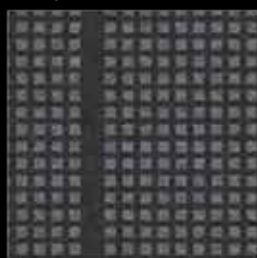
MET 01-19



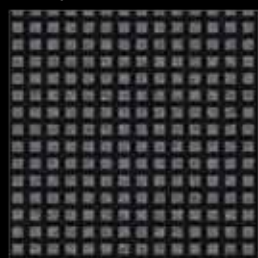
MET 01-25



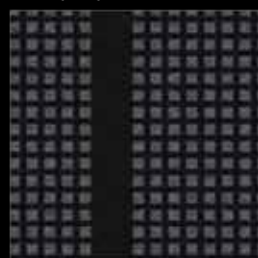
MET 01-26



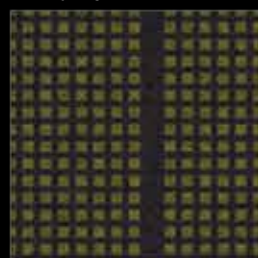
MET 01-28



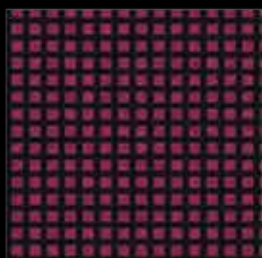
MET 01-29



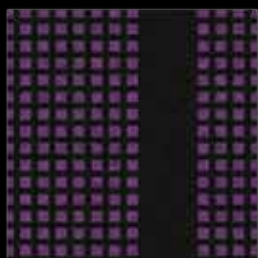
MET 01-30



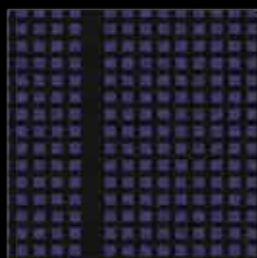
MET 01-31



MET 01-37



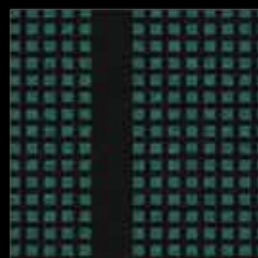
MET 01-36



MET 01-35



MET 01-34



MET 01-33



MET 01-32

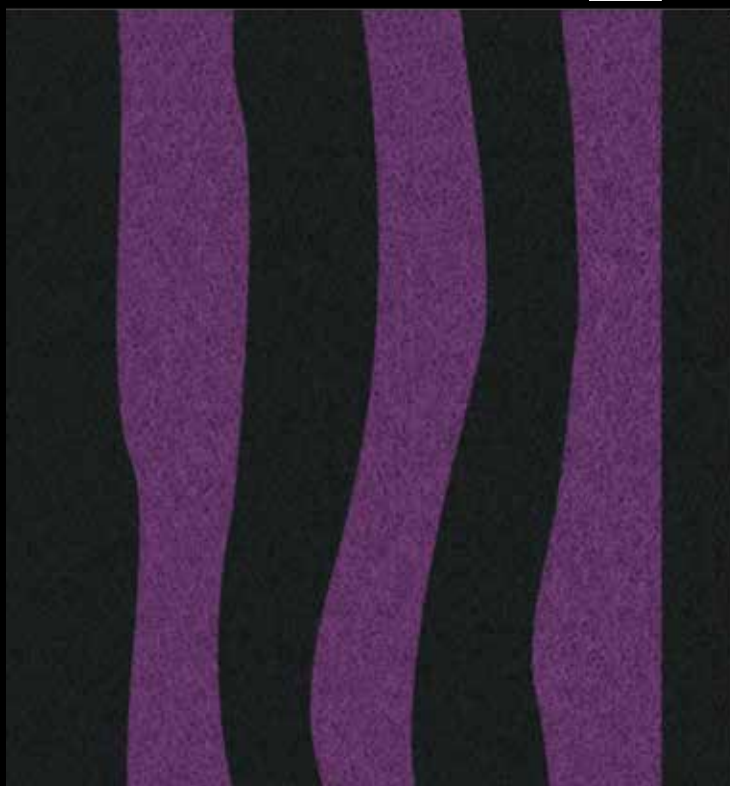
# METROPOLIS 02



PATTERN REPEAT 64 CM  
ROLLS LAID IN REVERSE  
DIRECTION OR RANDOMLY



IN STOCK 919202



IN STOCK 919227



919227

Items below are special colour combinations available to order for a minimum of 400m<sup>2</sup>.



MET 02-1



MET 02-2



MET 02-3



MET 02-4



MET 02-5



MET 02-6



MET 02-12



MET 02-11



MET 02-10



MET 02-9



MET 02-8



MET 02-7



MET 02-13



MET 02-14



MET 02-15



MET 02-16



MET 02-17



MET 02-18



MET 02-24



MET 02-23



MET 02-22



MET 02-21



MET 02-20



MET 02-19



MET 02-25



MET 02-26



MET 02-27



MET 02-28



MET 02-29



MET 02-31



MET 02-38



MET 02-36



MET 02-35



MET 02-34



MET 02-33



MET 02-32

## Technical specifications

ISO 1765

Total thickness	ISO 1765
Thickness of wear layer	
Residential application	EN 1470
Commercial application	EN 1470
Product form	
Roll length	CEN/TS 14159
Roll width	CEN/TS 14159
Installation method	NF 262
Fibre composition of the wear layer	Directives 73/44/CEE and 96/73/CE
Fibre composition of the backing	
Construction	
Total weight	ISO 8543
Impact sound reduction	EN ISO 140-8 EN ISO 717-2
Sound absorption	EN ISO 354 EN ISO 11654
Suitability for castor chairs	EN 985
Indoor air emissions : TVOC* at 28 days Requirement for class A+	EN ISO 16000 (ISO 10580)
GuT label	
REACH - European regulation (Regulation, Evaluation, Authorisation & Restriction of Chemicals)	1907/2006/CE

Showtime products meet the requirements of EN 14041

T

Reaction to fire	EN 13501-1
Slip resistance	EN 13893
Static electrical propensity	ISO 6356
Thermal conductivity	EN 12524 (EN ISO 10456)

L

showtime<sup>®</sup> nuance

3,8 mm
1,3 mm
Class 23
Class 32
Rolls
40 m
2 m
Rolls laid in same direction ↑ ↑
100% polyamide
100% recycled polyester
Fully impregnated
750 g/m <sup>2</sup>
L <sub>w</sub> = 19 dB
α <sub>w</sub> = 0,15 (H)
Yes
< 100 g/m <sup>3</sup> < 1000 g/m <sup>3</sup>
Application underway
compliant (1)

showtime<sup>®</sup> experience

3,8 mm
1,3 mm
Class 23
Class 32
Rolls
40 m
2 m
Design dependent, refer to brochure
100% polyamide
100% recycled polyester
Fully impregnated
750 g/m <sup>2</sup>
L <sub>w</sub> = 19 dB
α <sub>w</sub> = 0,15 (H)
Yes
< 100 g/m <sup>3</sup> < 1000 g/m <sup>3</sup>
Application underway
compliant (1)

CE

C - s1 (2)
DS ( 0,30)
E 2 kV , Antistatic
0,06 W/(m.K), suitable for use with under floor heating

(1) Showtime products do not contain substances from the candidate list (substances of very high concern) published by the ECHA within the REACH regulation framework

(2) When laid on a wood substrate. Achieves A2, when laid on concrete

\* TVOC : Total volatile organic compounds : quantity emitted to indoor air

De Projectinrichter

www.deprojectinrichter.com

088 - 650 12 34