

# FINISHES

All our products are available in an optimum range of colours based on an in-house paint saving system developed by Enea, the upholstery options can also be customised to specific projects and design requirements.

Todos nuestros productos se fabrican en una amplia gama de colores con un sistema propio de ahorro de pintura desarrollado por Enea. Las opciones de tapizado permiten responder a exigencias específicas de proyectos y diseño.

De Projectinrichter 

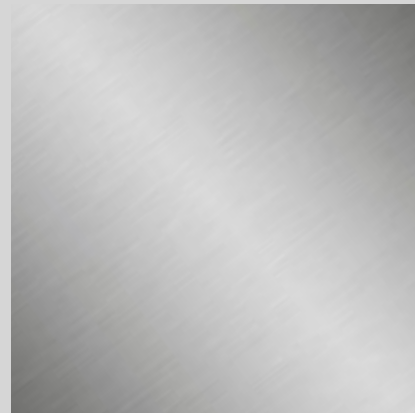
[www.deprojectinrichter.com](http://www.deprojectinrichter.com)  
088 - 650 12 34

Consultar muestrarios o visitar la web  
[www.eneadesign.com](http://www.eneadesign.com)

# MATERIALS



Steel / Acero



Aluminium / Aluminio



Polypropylene / Polipropileno



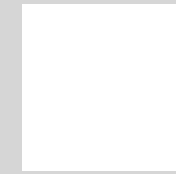
Upholstery / Tapicería

The construction of all Enea products involves the selection of optimum materials for each application and function, in accordance with environmental protection and optimum sustainability criteria.

La fabricación de todos los productos de Enea se realiza seleccionando los materiales óptimos para cada aplicación y funcionalidad a fin de proteger el medio ambiente según las normativas de sostenibilidad.

# FINISHES

## Lacquered / Lacado



9 / b\* (RAL 9016)  
White



3 / n\* (RAL 9005)  
Jet Black



G\* (RAL 7016)  
Anthracite Grey



7 (RAL 9006)  
Bright Aluminium



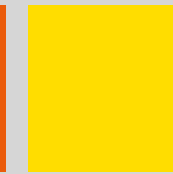
2\* (RAL 7032)  
Pebble Grey



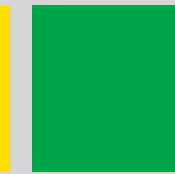
R\* (RAL 3002)  
Carmine Red



O\* (RAL 2010)  
Signal Orange



y\* (RAL 1023)  
Yellow



E\* (RAL 6017)  
May Green



W\* (RAL 5005)  
Blue

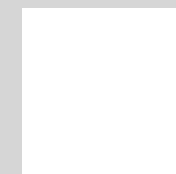
\* Textured

## Chromed / Cromado



4 (CR.)

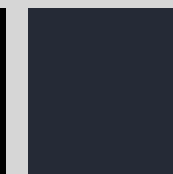
## Polypropylene/ Polipropileno



003 (RAL 9016)  
White



400 (RAL 9005)  
Jet Black



414 (RAL 7016)  
Anthracite Grey



017 (RAL 7004)  
Signal Grey



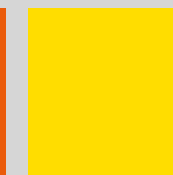
015 (RAL 7032)  
Pebble Grey



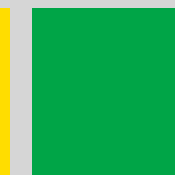
409 (RAL 3002)  
Carmine Red



013 (RAL 2010)  
Signal Orange



019 (RAL 1023)  
Yellow



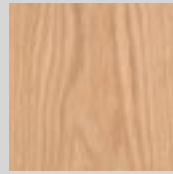
014 (RAL 6017)  
May Green



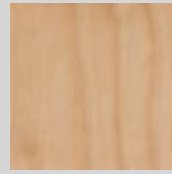
505 (RAL 5005)  
Violet

# FINISHES

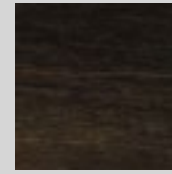
## 2D Wood



X - Oak



Y - Birch



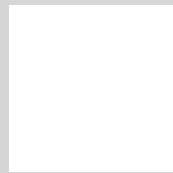
S - Birch

## 3D Wood

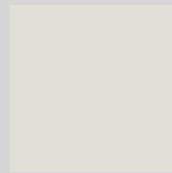


3D449 Oak

## Melamine / Melamina



B



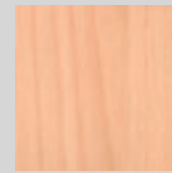
G



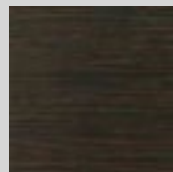
K



J

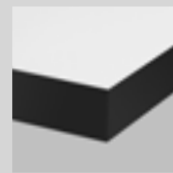


H



I

## HPL Compact



B - White with black color core



N - Black with black color core

## Fenix NTM



B - White with white color core

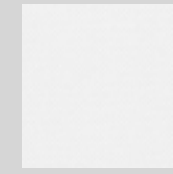


N - Black with black color core

# FINISHES

## Upholstery / Tapicería

### Gabriel



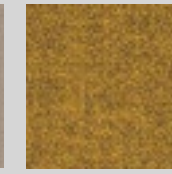
Atlantic Group D



Medley Group D



Step Group E



Step Melange Group E



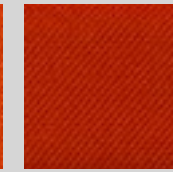
Europost 2 Group G



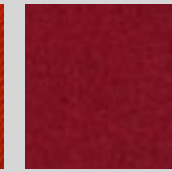
Fame Group F



Crisp Group G



Atlantic W40 Group G

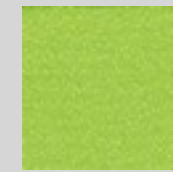


Luna 2 Group H

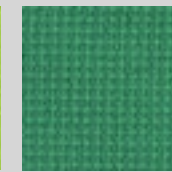


Comfort Group I

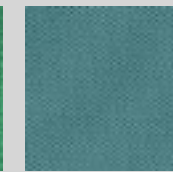
## camira



Xtreme Group C



Urban Group C



Sprint Group C



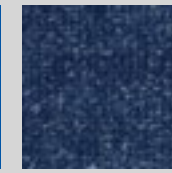
Advantage Group D



Main Line Flax Group E



Blazer Group F



Hemp Group F



Silk Group F

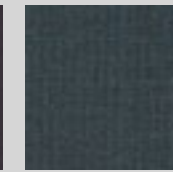
## kvadrat



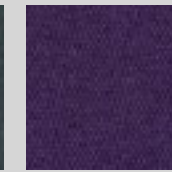
Revive 1/2 Group F



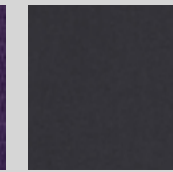
Field Group G



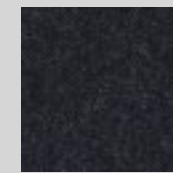
Remix Group H



Messenger Group H

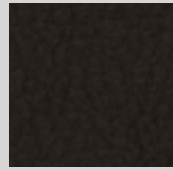


Steelcut Trio Group I



Hallingdal Group I

# FINISHES

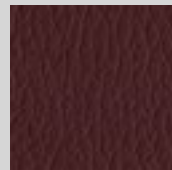


Valencia  
Group D

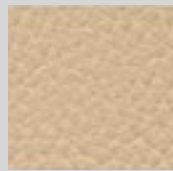
## ANTIC CUR



Piel Serraje  
Group L



Piel Serie 100  
Group L



Piel Napoli  
Group LN

# CERTIFICATES



The certificate of Quality Management System in accordance with the UNE-EN ISO 9001 (Spain) is testament to the capacity of the organization to consistently provide products and services that meet customer and associated regulatory requirements. This International Standard promotes the adoption of an approach based on the PDCA (Plan-Do-Check-Act) continuous improvement cycle.

El certificado del Sistema de Gestión de la Calidad según la norma UNE-EN ISO 9001 demuestra que la organización tiene capacidad para proporcionar de forma coherente productos o servicios que satisfacen los requisitos del cliente y los reglamentarios aplicables. Esta norma internacional promueve la adopción de un enfoque basado en el ciclo de mejora continua PDCA (Planificar, Hacer, Comprobar, Actuar).



The implementation of the Environmental Management System in accordance with the UNE-EN ISO 14001 (Spain) offers organisations the possibility to systematize all environmental aspects for the entirety of their activities. It also promotes protection of the environment and pollution prevention by taking into consideration socially responsible management and the optimization of resource and waste in order to reduce the negative environmental impacts of their activities.

La implantación del Sistema de Gestión Ambiental de acuerdo a la norma UNE-EN ISO 14001 ofrece la posibilidad de sistematizar los aspectos ambientales en cada una de las actividades que se desarrollan en la organización. También promueve la protección ambiental y la prevención de la contaminación teniendo en cuenta la gestión socialmente responsable, así como la optimización de recursos y residuos para reducir los impactos ambientales negativos derivados de su actividad.



The AENOR Ecodesign certificate demonstrates that the organization has adopted a management system to identify, monitor and continuously improve the environmental aspects of its products and/or services by providing information to their customers about the products that have incorporated environmental improvements through their design, in accordance with the UNE-EN ISO 14006 (Spain).

El certificado de Ecodiseño de AENOR demuestra que la organización ha adoptado un sistema de gestión para identificar, controlar y mejorar de manera continua los aspectos ambientales de sus productos y/o servicios facilitando información a sus clientes sobre los productos que han incorporado mejoras ambientales a través del diseño, de acuerdo con la norma UNE-EN ISO 14006.