

S/PS 142

Eugenio Gerli
.66

De Projectinrichter

www.deprojectinrichter.com
088 - 650 12 34

S/PS 142



INTRO

The 142 Series, designed by Eugenio Gerli, is greatly appreciated for its functionality and its ability to blend into all kinds of domestic, work and hospitality environments. The 142 Series has stood the test of time and become a classic Tecno product.

The series was conceived to satisfy the demand that arose as the result of the revolution in home design that began in the 1960s, when the lounge, dining room and relaxation area all began to merge into one multi-purpose space.

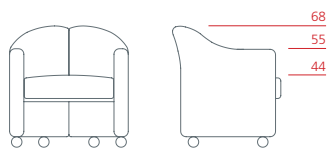
142 Series chairs come in a higher, more upright version (the S142) and in the lower, more enveloping armchair (the PS142). Both have a metal structure, are fully upholstered in fabric or leather covered polyurethane foam, and can be fitted with wheels or feet.

DESIGNER

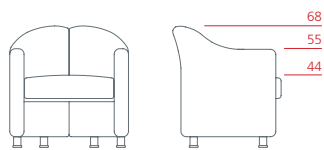


Eugenio Gerli

S/PS 142



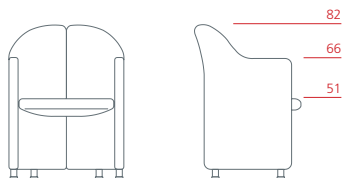
Armchair on castors
1PS6011: L 68 D 60 H 68



Armchair on feet
1PS6012: L 68 D 60 H 68



Tall armchair on castors
1PS6021: L 57 D 56 H 82



Tall armchair on feet
1PS6022: L 57 D 56 H 82

S/PS142

UPHOLSTERY

See the following fabrics and leathers list

Fabrics 1/4

TC (Category 01)

CUSTOM

CUSTOMER OWN FABRIC

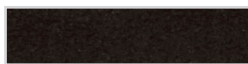
LANI (Category 02)



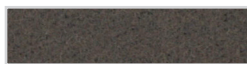
LIGHT GREY



DARK GREY



BLACK



BROWN



OCHRE



MUSTARD



ORANGE



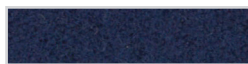
LIGHT RED



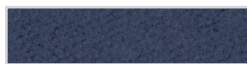
DARK RED



LIGHT BLUE



DARK BLUE



POWDER BLUE

Fabrics 2/4

FIELD (Category 02)



BLACK - WHITE



GREEN GREY



BLACK



CHALK



SAND



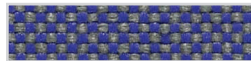
YELLOW



RED



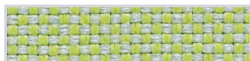
PURPLE



BLUE PURPLE



PETROLEUM BLUE



LIGHT GREEN



KIWI GREEN

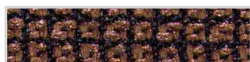
METRIC (Category 02)



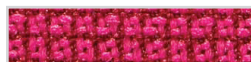
GREEN GREY



SAND



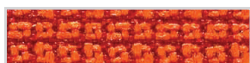
BROWN



MAGENTA



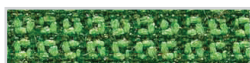
RED



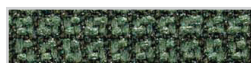
ORANGE



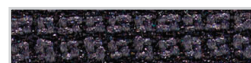
YELLOW



GREEN



OLIVE GREEN



BLACK - GREY



DARK GREY

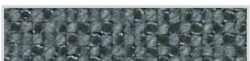


CLASSIC BLUE

HOT (Category 02)



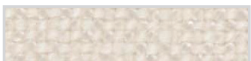
WHITE



DARK GREY



BLACK



CREME



SAND



BROWN



YELLOW



OCBRE YELLOW



ORANGE



PURPLE



CLASSIC BLUE



OLIVE GREEN

Fabrics 3/4

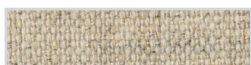
REMIX (Category 02)



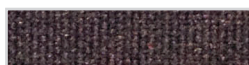
LIGHT GREY



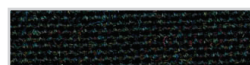
GREY



SAND



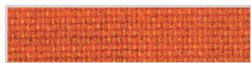
BURGUNDY



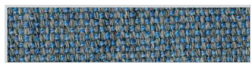
COFFE



EARTH



ORANGE



BLUE SKY



PETROLEUM BLUE



AQUAMARINE



LIGHT GREEN



GREEN

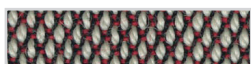
STEELCUT TRIO (Category 03)



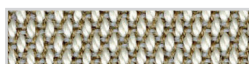
WHITE - BLACK



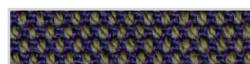
WHITE - GREY



WHITE - RED



BEIGE



BROWN - PURPLE



OCHRE YELLOW



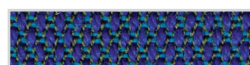
ORANGE



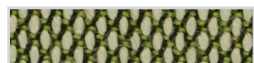
MAGENTA



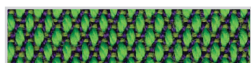
ICE



PURPLE - TURQUOIS



GREEN - WHITE



GREEN - PURPLE

STEELCUT 2 (Category 03)



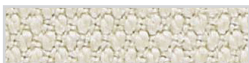
CREME



GREEN GREY



BLACK



KHAKI



BROWN



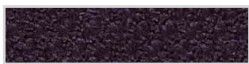
YELLOW



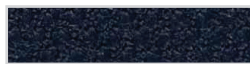
ORANGE



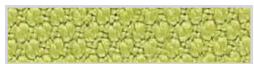
RED



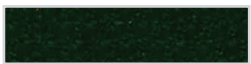
AUBERGINE



CLASSIC BLUE



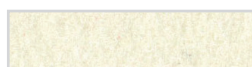
LAWN GREEN



OLIVE GREEN

Fabrics 4/4

DIVINA (Category 03)



CHALK



BLACK



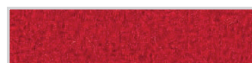
SAND



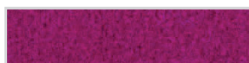
YELLOW



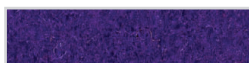
ORANGE



RED



MAGENTA



PURPLE



ELETTRIC BLUE



CLASSIC BLUE

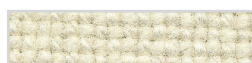


LIGHT GREEN



KIWI GREEN

HALLINGDAL (Category 03)



CREME



GREY



BLACK - GREY



BROWN - GREY



BROWN



OCHRE YELLOW



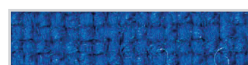
ORANGE



ORANGE - MARS



RED



ELETTRIC BLUE



PURPLE

Leather

LEATHER (Category 04)



WHITE



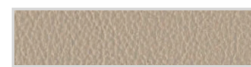
CHALK



CREME



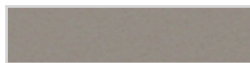
SAND



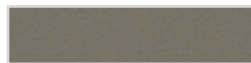
SAHANA



KHAKI



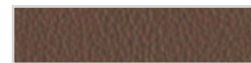
HEMP



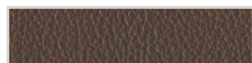
BRACCO



GREY



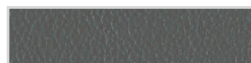
COCOA



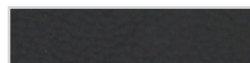
BLACK TEA



COFFEE



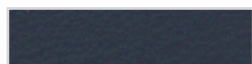
DARK GREY



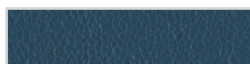
SLATE GREY



BLACK



MIDNIGHT BLUE



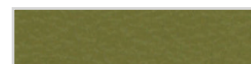
BLUE



DARK GREEN



OLIVE



AVOCADO



CREAM



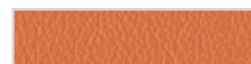
OCHRE YELLOW



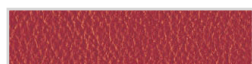
MANGO



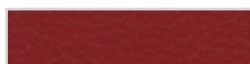
GRAPEFRUIT



ORANGE



RED



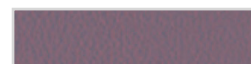
CRIMSON



DARK RED



BLACKBERRY



MAUVE