

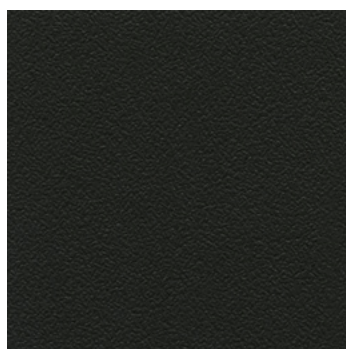
De Projectinrichter

www.deprojectinrichter.com

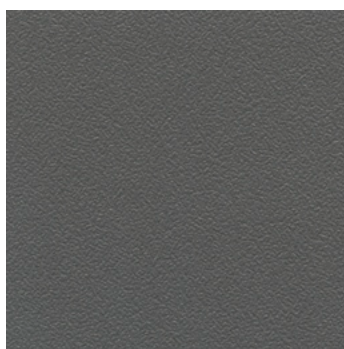
088 - 650 12 34

Oberflächen. **Wilkhahn**
Finishes.
Finitions.
Superficies.

Schichtstoff.
Laminate.
Stratifié.
Laminado plástico.



24/99 Black



24/88 Dark grey



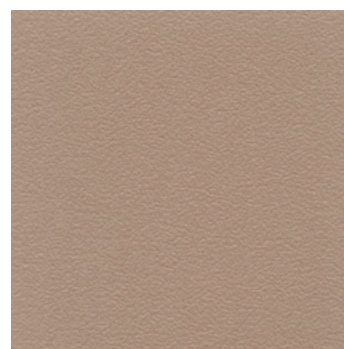
24/89 Pale grey



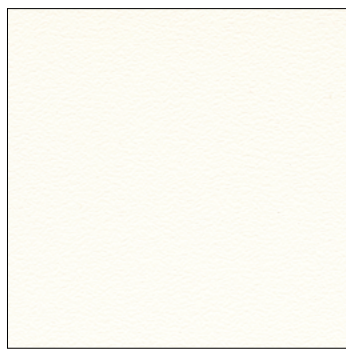
24/84 Grey



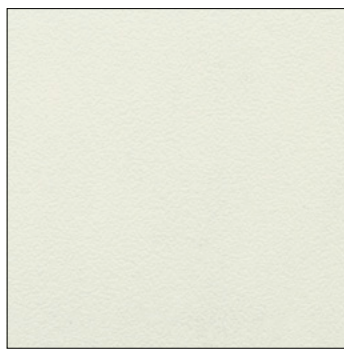
24/25 Ivory



24/26 Cappuccino



24/20 White



24/22 Beige

Schichtstoff Holzdekor.
Laminate wood decor.
Stratifié décor bois.
Laminado tipo madera.



25/02 Acacia



25/21 Oak



25/39 Walnut



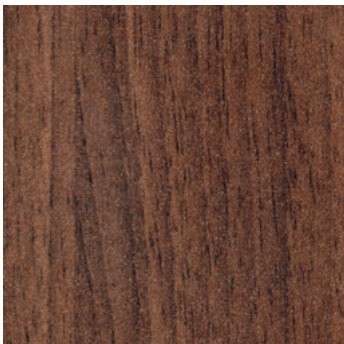
25/06 Cherry



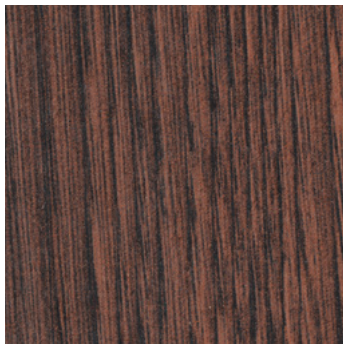
25/84 Teak



25/10 Elm



25/19 Dark walnut

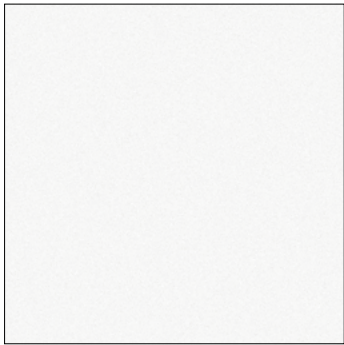


25/20 Dark oak



25/14 Dark ash

Schichtstoff Softmatt.
Soft matt laminate.
Stratifié Softmat.
Laminado plástico mate antihuellas.



26/79 White



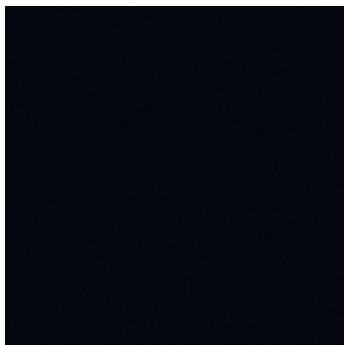
26/60 Pale grey



26/77 Grey-beige

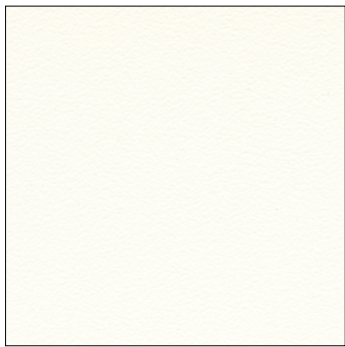


26/30 Dark grey



26/01 Black

Direktbeschichtung.
Bonded surface.
Plateaux mélaminés à chaud.
Capa directa.



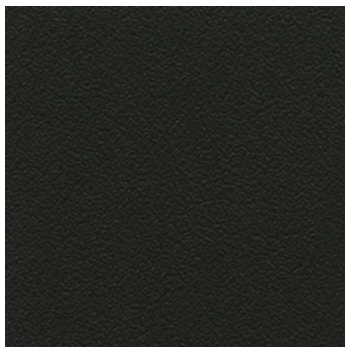
White



Light grey



Dark grey



Black

Weitere Oberflächen entnehmen Sie bitte der Wilkhahn-Karte „Holzfarbtöne“.
Original-Muster auf Anfrage. Farbnamen siehe Rückseite.

Places see the Wilkhahn Wood Stain card for details of further surfaces.
Original samples on request. See the reverse for the names of the colours.

Finitions supplémentaires : veuillez vous reporter au nuancier Wilkhahn 'Teintes de bois'.
Échantillons sur demande. Dénomination des coloris au verso.

En la cartulina de maderas de Wilkhahn encontrará más detalles sobre otras superficies.
Muestras originales bajo petición. Vea el reverso para los nombres de los colores.

Gedruckte Oberflächen.
Originalmuster können
abweichen.

Printed surfaces.
Actual samples can differ.

Échantillons imprimés.
Écarts possibles avec
le rendu des finitions
originales.

Acabados de las
superficies impresas.
Las muestras reales
pueden diferir.

Schichtstoff

24/99 Schwarz
24/88 Dunkelgrau
24/89 Sandgrau
24/84 Grau
24/25 Elfenbein
24/26 Cappuccino
24/20 Weiß
24/22 Beige

Laminate

24/99 Black
24/88 Dark grey
24/89 Pale grey
24/84 Grey
24/25 Ivory
24/26 Cappuccino
24/20 White
24/22 Beige

Stratifié

24/99 Noir
24/88 Gris foncé
24/89 Gris sable
24/84 Gris
24/25 Ivoire
24/26 Cappuccino
24/20 Blanc
24/22 Beige

Laminado plástico

24/99 Negro
24/88 Gris oscuro
24/89 Gris arena
24/84 Gris
24/25 Marfil
24/26 Cappuccino
24/20 Blanco
24/22 Beige

Schichtstoff Holzdekore

25/02 Akazie
25/21 Eiche
25/39 Walnuss
25/06 Kirsche
25/84 Teak
25/10 Ulme
25/19 Nussbaum dunkel
25/20 Eiche dunkel
25/14 Esche dunkel

Laminate wood decor

25/02 Acacia
25/21 Oak
25/39 Walnut
25/06 Cherry
25/84 Teak
25/10 Elm
25/19 Dark walnut
25/20 Dark oak
25/14 Dark ash

Stratifié décor bois

25/02 Acacia
25/21 Chêne
25/39 Noyer
25/06 Merisier
25/84 Teak
25/10 Orme
25/19 Noyer foncé
25/20 Chêne foncé
25/14 Frêne foncé

Laminado tipo madera

25/02 Acacia
25/21 Roble
25/39 Nogal
25/06 Cerezo
25/84 Teca
25/10 Olmo
25/19 Nogal oscuro
25/20 Roble oscuro
25/14 Fresno oscuro

Schichtstoff

Softmatt

26/79 Weiß
26/60 Lichtgrau
26/77 Graubeige
26/30 Dunkelgrau
26/01 Schwarz

Soft matt

laminate

26/79 White
26/60 Pale grey
26/77 Grey-beige
26/30 Dark grey
26/01 Black

Stratifié

Softmat

26/79 Blanc
26/60 Gris pâle
26/77 Gris-beige
26/30 Gris foncé
26/01 Noir

Laminado plástico

mate antihuellas

26/79 Blanco
26/60 Gris luminoso
26/77 Gris beige
26/30 Gris oscuro
26/01 Negro

Direktbeschichtung

Weiß
Hellgrau
Dunkelgrau
Schwarz

Bonded surface

White
Light grey
Dark grey
Black

Plateaux mélaminés

à chaud

Blanc
Gris clair
Gris foncé
Noir

Capa directa

Blanco
Gris claro
Gris oscuro
Negro

50782000 - SR

Wilkhahn Germany

Wilkening + Hahne GmbH+Co. KG, Fritz-Hahne-Straße 8, 31848 Bad Münder

Wilkhahn worldwide

Australia, Belgium, China, Deutschland, España, France, Hong Kong, Japan, Maroc, Nederland, Österreich, Polska, Schweiz, Singapore, South Africa, United Arab Emirates, United Kingdom, United States of America

wilkhahn.com

De Projectinrichter

www.deprojectinrichter.com

088 - 650 12 34