

Product Environmental Data Sheet

Sector: North America

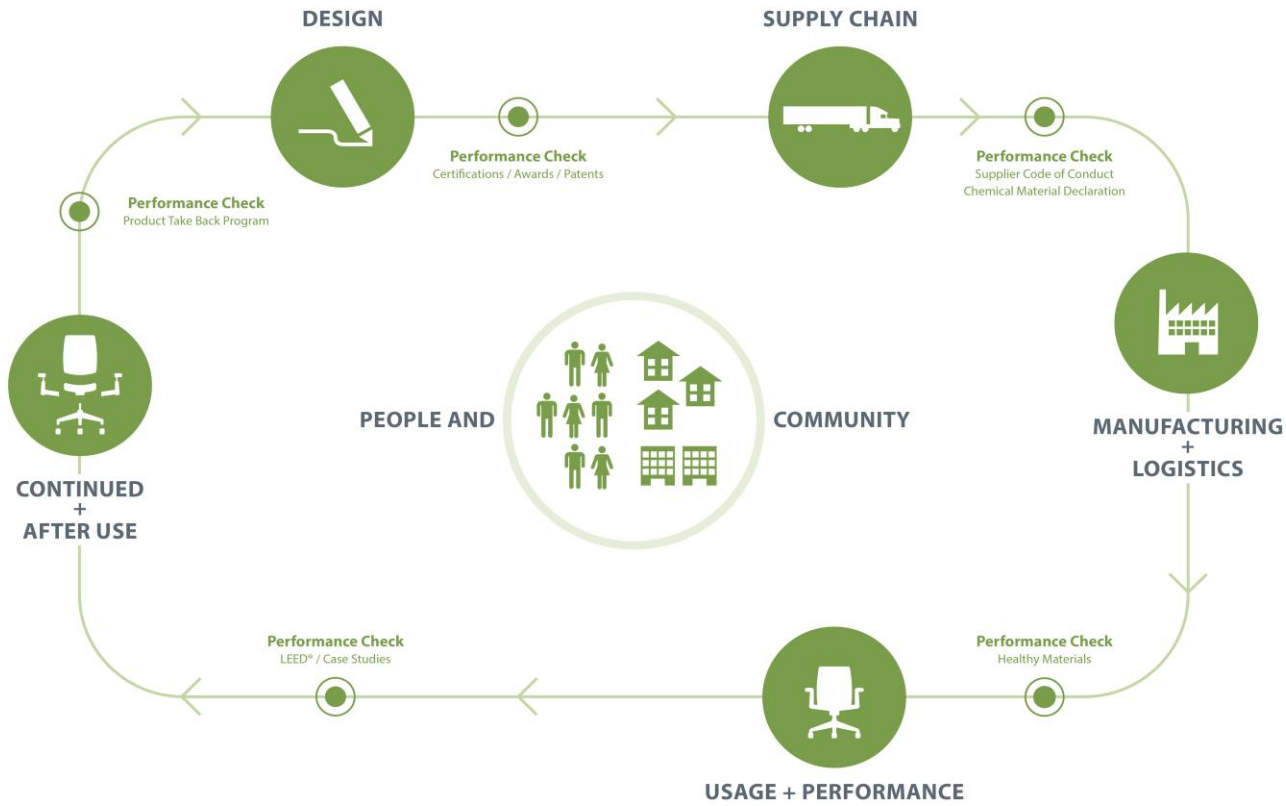
De Projectinrichter

www.deprojectinrichter.com  
088 - 650 12 34



Planes Table®

Category: Tables

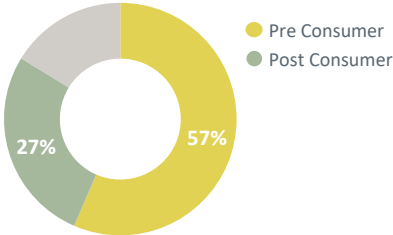


Beautifully simple and thoughtfully designed, Planes will change the way you look at collaborative spaces. Its clean, linear design allows for more than 80,000 distinct combinations to suit your objectives and aesthetic.

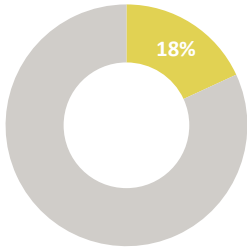
Planes is manufactured in a zero landfill, ISO 9001 and ISO 14001 certified facility in Holland, Michigan and is transported in freight vehicles with optimized volume for efficient use of loading space. When a product reaches the end of its useful life, customers and partners are encouraged to avoid landfilling and instead pursue second life options – through remanufacturing or charitable donations, or recycling of materials.

Material	Material Weight	
Particleboard	89.78 lbs	(65%)
Aluminum	22.45 lbs	(16%)
Steel	1.40 lbs	(1%)
Plastic	1.06 lbs	(1%)
Other	22.74 lbs	(17%)

Recycled Content



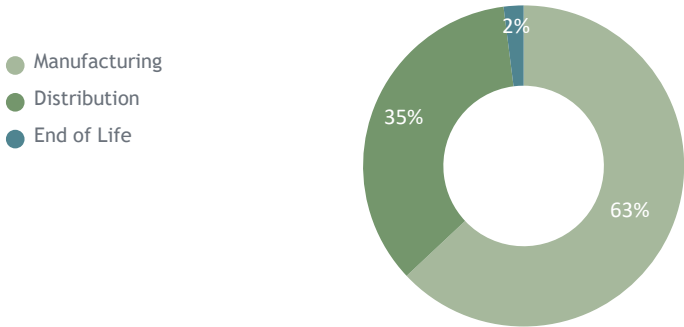
Recyclability



Life Cycle Assesment (LCA)

Carbon Footprint	250 kg CO <sup>2</sup> eq.
Acidification	1.43 kg SO <sub>2</sub> eq.
Eutrophication	0.178 kg N eq.
Smog	26.6 kg O <sub>3</sub> eq.

Impact by Life Cycle Stage



Material Chemistry

Haworth is committed to providing our customers with products that support safe and healthy environments. We are working diligently toward the ongoing reduction of hazardous chemicals associated with parts and materials we source, as new safer alternatives become commercially available.

These include, among others, PVC, benzidine dyes, hexavalent chromium, certain hazardous phthalates, PBDE flame retardants, and those chemicals known to contribute towards ozone depletion.

We are committed to achieving our goal of being transparent with our customers on our progress.

☒ Healthier Hospitals Healthy Interiors Compliant

Certifications



**Greenguard Certified**  
Certification # 12057-410  
Refer to [spot.ul.com](https://spot.ul.com) for certificate



**BIFMA level 3 certified**  
Refer to [NSF.org](https://NSF.org) for certificate



**Forest Stewardship Council® certified wood is**  
as a standard product offering  
Chain of Custody Code: SCS-COC-001218

Building Standards

In support of building standards such as Leadership in Energy and Environmental Design, LEED® v4 and WELL Building Standard®v2:

- Low Emitting:
- Most Haworth products comply with ANSI/BIFMA e3-2014e Credit 7.6.1 and 7.6.2.
  - Demonstration via GREENGUARD certificates.

- Responsible Sourcing of Raw Materials:
- Most Haworth wood products are available as FSC® Mix 70%.
  - Most Haworth products are composed of high recycled content.

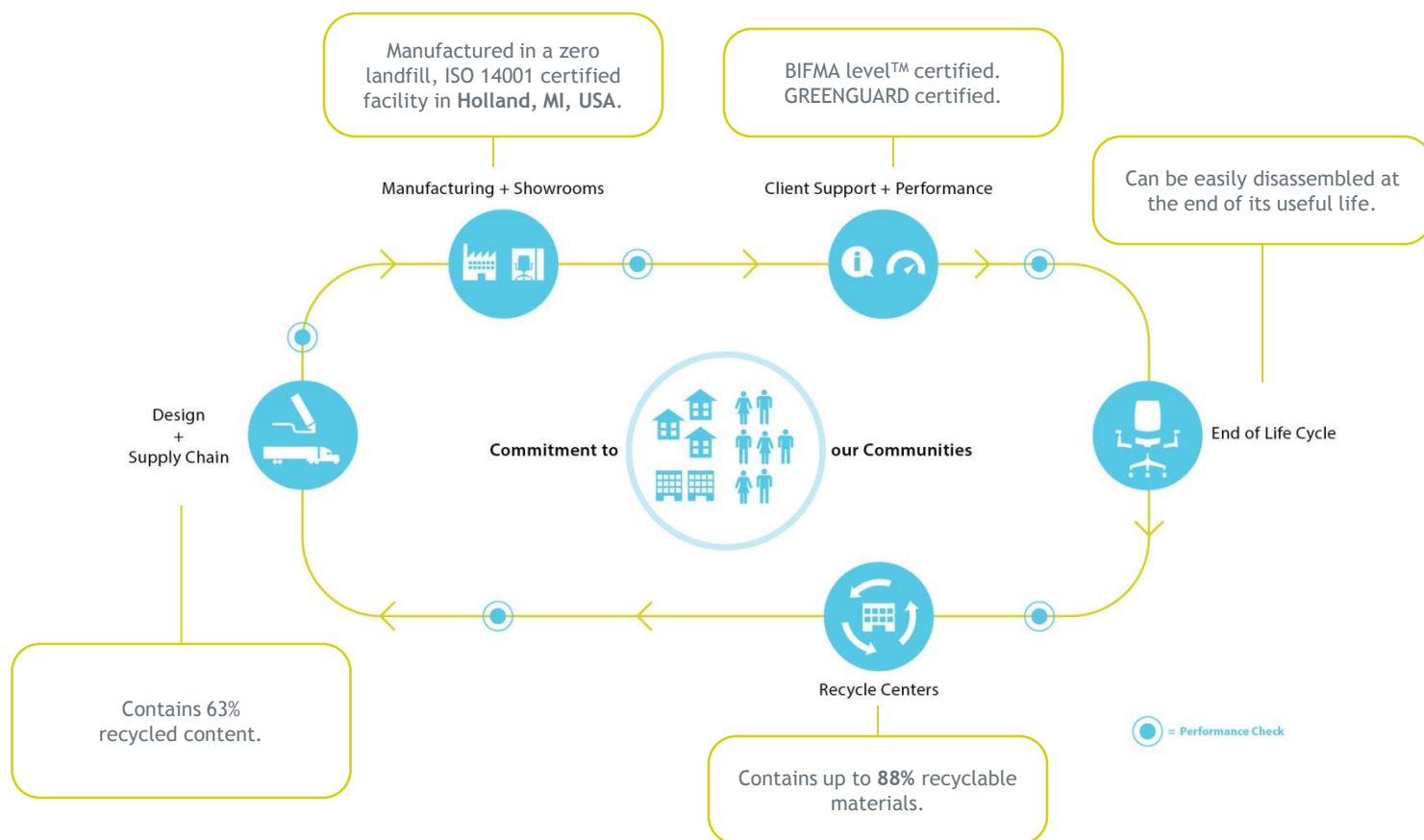
- Environmental Product Declarations (EPDs):
- Product-specific Type III EPDs including external verification are available for certain high-volume products.

# Planes Height Adjustable®

PRODUCT CATEGORY: TABLES

## PRODUCT ENVIRONMENTAL DATA SHEET

SECTOR: NORTH AMERICA



# HAWORTH®

Beautifully simple and thoughtfully designed, Planes Height Adjustable Table will change the way you look at collaborative spaces. Its clean, linear design allows for more than 80,000 distinct combinations to suit your objectives and aesthetic.

### RECYCLED CONTENT

	Material Weight	Post-Consumer Recycled Content	Pre-Consumer Recycled Content
Steel	66.26 lbs (46%)	8.05 lbs	20.19 lbs
Particleboard	56.25 lbs (40%)	16.87 lbs	39.37 lbs
Laminate	7.09 lbs (5%)	2.41 lbs	0.00 lbs
Kraft Paper	7.09 lbs (5%)	2.20 lbs	0.00 lbs
Plastics	3.36 lbs (2%)	0.00 lbs	0.00 lbs
<b>Total</b>	<b>142.18 lbs (100%)</b>	<b>29.56 lbs (21%)</b>	<b>60.29 lbs (42%)</b>

## PRODUCT CERTIFICATIONS



GREENGUARD certified  
Certification # 75480-410



Forest Stewardship Council® (FSC®)  
certified wood is available as standard  
product offering.

Chain of Custody: SCS-COC-001218



level™ 3 certified  
Refer to website, [BIFMA level listing](#) for  
certificate

## LIFE CYCLE ASSESMENT (LCA) SUMMARY

Life Cycle Assessments (LCAs) are one tool which allows us to enhance the triple bottom line of Haworth products by identifying high environmental impact stages within our products' lifecycles. Haworth is committed to better understanding and reducing the impacts of our products and operations on the natural world.

At Haworth, we are committed to looking beyond carbon footprint by taking a detailed inventory of our product's impacts through LCA, including human and ecosystem toxicity, land use and water quality. Over the past several years, Haworth has conducted over 95 product life cycle assessments globally. Results of the LCA studies provide value in the identification of cost savings, improvement of design and material evaluation, advancement of procurement and transportation decision making, new product development criteria, as well as ultimately reducing Haworth's impact on the environment through continuous improvement efforts.

## MATERIAL CHEMISTRY\*

We believe that our products should be safe for humans and the environment. That's why we are working diligently to identify and eliminate chemicals of concern in the materials we source. While we have identified more than 870 chemicals that we plan to eliminate from our products throughout the next 10 years, we have identified 56 chemicals that we plan to eliminate by 2018.

These include, among others, PVC, benzidenedyes, ozone depletors, hexavalentchromium, certain hazardous phthalates, and PBDE flameretardants. We are committed to achieving this goal and being transparent with our customers about our progress.

## RECYCLABILITY &amp; END OF LIFE MANAGEMENT

	Material Weight	Recyclable Content
Steel	66.26 lbs (47%)	66.26 lbs
Particleboard	56.25 lbs (40%)	56.25 lbs
Laminate	7.09 lbs (5%)	0.00 lbs
Kraft Paper	7.09 lbs (5%)	0.00 lbs
Plastics	3.35 lbs (2%)	3.35 lbs
<b>Total</b>	<b>142.18 lbs (100%)</b>	<b>125.86 lbs (88%)</b>

Once a Haworth product reaches the end of its life, our product's end-of-life program ensures that customers have options (e.g., recycling, resale, refurbishment, and donation) to prevent it from being discarded into a landfill. To encourage recycling, we have published disassembly instructions for many of our products on the individual product pages. Our products have been intentionally built using highly-recyclable metals and plastics including steel, aluminum, polypropylene, and nylon.

We encourage our customers to contact us regarding end-of-life options in their region so that we can help them make the world a better place for future generations.

The polyethylene film and corrugated cardboard packaging materials used on Planes are both readily recyclable.

**HAWORTH®**

---

LEADERSHIP IN ENERGY AND ENVIRONMENTAL DESIGN (LEED®) v2009

---

**Interior Design and Construction (ID+C)**

MRC4: Recycled Content	Planes contains 21% post-consumer and 42% pre-consumer recycled content.	1-2 points
MRC5: Regional Materials	Planes is manufactured in Holland, MI, USA.	1-2 points
MRC7: Certified Wood	FSC certified wood available as standard product with some finish restrictions.	1 point
IEQc4.5: Low-emitting materials - Systems Furniture and Seating	Planes is GREENGUARD certified as low-emitting.	1 point

**Building Design and Construction (BD+C)**

MRC4: Recycled Content	Planes contains 21% post-consumer and 42% pre-consumer recycled content.	1-2 points
MRC5: Regional Materials	Planes is manufactured in Holland, MI, USA.	1-2 points
MRC7: Certified Wood	FSC certified wood available as standard product with some finish restrictions	1 point

**Existing Buildings: Operations and Maintenance (EB:OM)**

MRC2: Sustainable Purchasing - Durable Goods	Planes contains 21% post-consumer and 42% pre-consumer recycled content.	1-2 points
--	--	------------

To learn more about Haworth sustainability initiatives [click here](#).

Product Support

Visit [www.haworth.com](http://www.haworth.com) to find the Haworth dealer closest to you.

Environmental support

Contact [sustainability@haworth.com](mailto:sustainability@haworth.com)

## LEADERSHIP IN ENERGY AND ENVIRONMENTAL DESIGN (LEED®) v4

## LEED ID+C: Commercial Interiors | v4

MR109: Interiors life-cycle impact reduction	Depending on products chosen, Haworth products can contribute to some of the design for flexibility strategies including; take back system, recyclable materials, flexible power distribution, moveable walls, or access flooring.	1-4 points
MR114: Building product disclosure & optimization- sourcing of raw materials	Haworth is a member of the UN Global Compact and published an annual Communication of Progress which contributes to Option 1: raw material source and extraction reporting. Haworth products also contain recycled content or FSC certified wood which contribute to Option 2: leadership extraction practices.	1-2 points
IEQ112: Low-emitting Materials	Haworth products are Greenguard certified which is compliant with ANSI/BIFMA Standard Method M7.1-2011.	1-3 points

## LEED BD+C: New Construction | v4

MR114: Building product disclosure & optimization- sourcing of raw materials	Haworth is a member of the UN Global Compact and published an annual Communication of Progress which contributes to Option 1: raw material source and extraction reporting. Haworth products also contain recycled content or FSC certified wood which contribute to Option 2: leadership extraction practices.	1-2 points
IEQ112: Low-emitting Materials	Haworth products are Greenguard certified which is compliant with ANSI/BIFMA Standard Method M7.1-2011.	1-3 points

To learn more about Haworth sustainability initiatives [click here](#).

Product Support

Visit [www.haworth.com](http://www.haworth.com) to find the Haworth dealer closest to you.

Environmental support

Contact [sustainability@haworth.com](mailto:sustainability@haworth.com)



De Projectinrichter

[www.deprojectinrichter.com](http://www.deprojectinrichter.com)  
088 - 650 12 34

**HAWORTH®**