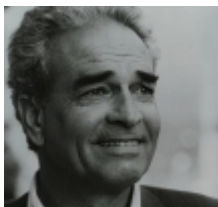


## highframe - 416

Stacking chair with structure composed of extruded aluminium profile and die-cast aluminium elements, seat and back in fire retardant PVC covered polyester mesh or in leather or in Kvadrat® fabric.



design  
Alberto Meda

The frame collection is characterised by PVC covered polyester mesh available in many colour variants, with a structure in extruded aluminium and stove enamelled die casting components. Comprised of an array of products, each designed differently to combine comfort and function, frame is a successful collection which over the years has become an icon for other collections. The products of the frame collection express a light but accurate lines represented by a selection of comfortable chairs varying in shapes and sizes such as highframe, bigframe and frame XL stacking chairs available with or without armrests. The leather and the fabric versions further enhance the collection as an alternative to the PVC covered polyester mesh choice for a sober and informal style.

The frame chairs, thanks to their lightness and stackability, can be transferred with elegance from the more private dimension of the home and office to the public one and open environments. The polyester mesh coated with PVC, on a structure made of extruded aluminium profile, stove enamelled, polished, or chromed, with die-cast aluminium elements, is available in many colours. Amongst numerous versions in different colours, a range of colours all in melange versions are distinguished: green, beige and orange.

In different sizes the stacking chairs highframe, bigframe and frame XL are available with stove enamelled extruded aluminium profile in 5 new, contemporary colours; coral red, aubergine, cedar, sand, ice. PVC covered polyester mesh in the same colours or in white matches the aluminium structure and make it more relevant.

Rollingframe chairs, with five-star bases, can enhance the more private dimension of the home office to the executive office, to the operative offices with unrestricted elegance. The swivel base supports an ergonomic seat upholstered in leather or mesh, with the option of the "plus" version which is a slightly wider and more comfortable alternative.

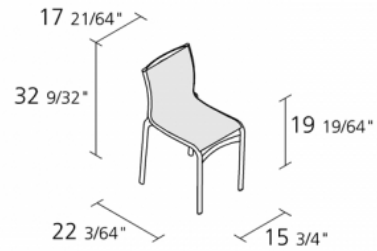
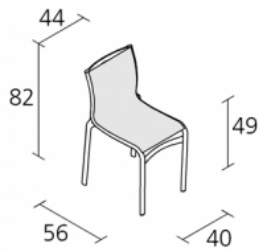
Thanks to the clean end essential line used to design the framework, the self adjusting swivel chair meetingframe with its 4-star base with glides, is perfect for meeting rooms. It has the structure made of extruded aluminium profile and die-cast aluminium elements; seat and back are in fire retardant PVC covered polyester mesh, in leather or in fabric.

The frame collection extends its range with the introduction of two families from Kvadrat® fabrics (Gloss 2 and Divina 3) and a new mesh expressly chosen to match the chromed frame. The colour of the mesh in PVC, supporting the fabric, always follows the finish of the frame. The colours of the selected fabrics cover could be matched to the combinations mesh-frame offered. The distinctive structure of frame is used again both for the armframe (available also with footstool) and elegant longframe chaise longue. Ideal for relaxing moments in a resort or health spa, these pieces, enhance any environment, yet also providing wellbeing and comfort with practical and elegant design.

Ideal for relaxing, comfortable, elegant, functional and ergonomic in private or public areas, floatingframe guarantees the same comfort in numerous applications. A connecting seating system with arms, available with stove enamelled, polished or chromed structure, can be

adjusted according to the needs.

## Dimension



Year warranty: 10 years

Production time: 4\* weeks

Maximum number of chairs for stacking: 10

Maximum number of chairs for trolley stacking: 15

Fire-retardancy

Greenguard® product certification

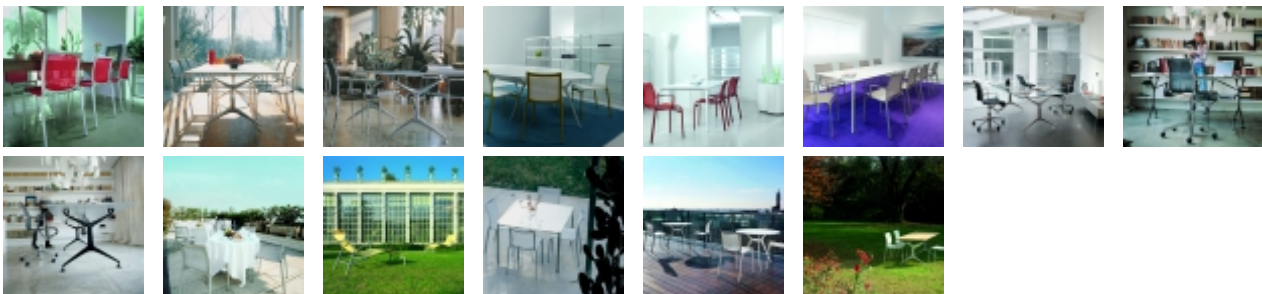
Boxes number: 1

Max.number pieces per a box: 2

Volume in m<sup>3</sup>: 0,308

Gross weight in Kg: 7,5

## Gallery



## References

Marthinal  
Resort

Diana  
Majestic

La  
Brughiera

Quay GrandSport più

Santa  
Marta

Banca  
Intesa

Kimbell Art  
Museum

Beyeler



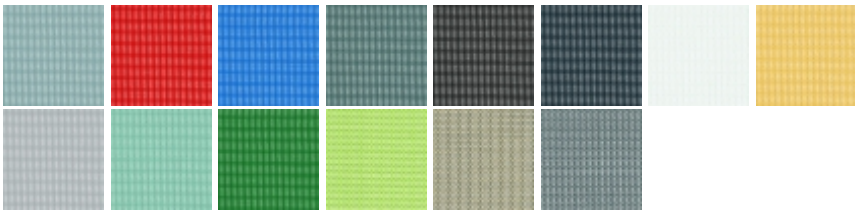

Università

IEO

Grand HotelOMC

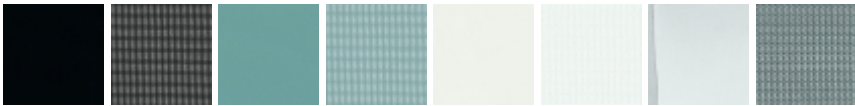
Hotel

## Finiture

<b>stove enamelled aluminium</b>	
<b>mesh 'S'</b>	white - only for stove enamelled and chromed versions (R026 ) black (R027 ) grey melange (R028 )
<b>stove enam.aluminium/mesh 'S'</b>	 white (R026 ) grey melange (R028 ) black (R027 )
<b>mesh</b>	
<b>leather 'S'</b>	black (PF01 ) white - only for stove enamelled and chromed versions (PF02 ) dark brown (PF03 ) claret red (PF04 )
<b>leather</b>	

**NOTE: the RAL color finish may be selected by the customer, subject to an extra charge for under 25 units and with no extra charge for over 25. Feasibility to be approved with our firm.**

## Finiture tessuto

<b>aluminium/mesh</b>	
<b>Kvadrat® fabrics</b>	Divina: 171 191 224 384 393 793 956 623 106 154 173 Gloss: 112 202 152 172 212 243 933 643
<b>* unless for the fabric version.</b>	

## Certifications and Technical sheet

test	standard	date
leg forward static load test	ANSI BIFMA X5.1-1993/19	14/07/00
leg sideways static load test	ANSI BIFMA X5.1-1993/20	14/07/00
test certificate FIRA	BS 4875-1 e BS 7945	10/04/01

De Projectinrichter

www.deprojectinrichter.com  
088 - 650 12 34